
CATALOGUE, 2023 / 2024



SÉBASTIEN COUDERT-MAUGENDRE

interior architect & designer

contact@coudert-maugendre.fr
www.coudert-maugendre.fr
instagram : @sebastien_coudert_maugendre



DRAM
Sofa



NYMPHEAS
Side table



TRIPODE
Armchair



NESTED STRUCTURES
Armchair RV03, Unique piece



CUMULUS
Armchair



EROSION
Side table



NESTED STRUCTURES
Console RV01, Unique piece



ALTARS
Armchair SV03, Unique piece

SÉBASTIEN COUDERT-MAUGENDRE

COLLECTION
ESTUAIRE





COLLECTION ESTUAIRE

Passionate about diving, the designer Sébastien Coudert-Maugendre lets himself be transported and inspired by the marvels of the seabed and coastal depths he explores. In a language that is both poetic and functional, he imagines sculptural creations evoking the multitude of life forms and materials present in these ecosystems.

By combining know-how and new technology, Sébastien Coudert-Maugendre gave birth to "Estuaire", a collection of tables and seats.

The designer establishes a surprising dialogue between raw or recycled materials - including clay, wood, marine

sediments, recycled aluminum casting, ceramic 3D printing and the textiles of the Maison Métaphores which dress the sofa and armchairs of the collection.

The aesthetic choices, such as the combination of fabrics and the finishes of each piece, are the result of a close collaboration between the designer and the editor, sharing the same view on the materials and the know-how.

Like an encounter between land and sea, "Estuaire" reflects the passage of time and water, the richness of marine fauna and flora, recalling the importance of preserving their natural habitats.

In a playful approach, Sébastien Coudert-Maugendre declines his collection in several sizes, colors and materials such as brass, steel or wood. These countless possibilities offer an amazing choice of customization. Thus, tables and seats can be used in a coordinated or independent way to create a singular landscape and an entirely tailor-made interior decoration.





CREATIVE DIALOGUE WITH MAISON MÉTAPHORES

Wishing to complete the collection, the designer called on the editor Maison Métaphores, a weaver and editor of upholstery fabrics attached to the Hermès textile industry, to enhance three seats: the Oram sofa, the Cumulus and Tripode armchairs.

Among the emblematic references of Métaphores, Le Crin woven by hand, brings refinement and originality to the Oram sofa. This unique know-how in the world is labeled Living Heritage Company.

Noble fiber, Le Crin offers both delicate vibrancy and remarkable resilience. Mixed with linen, wool, sisal or metallic threads, it creates patterns, light effects and captivating shades.

This collaboration also celebrates the creative dialogue between exceptional materials and avant-garde know-how, oriented towards an ever more daring modernity.

In a mineral and warm color palette, other textured fabrics and jacquards mingle with delicacy and bring an additional dimension to the overall aesthetic of the “Estuaire” collection.

Together, Métaphores and Sébastien Courdert-Maugendre have imagined an infinite number of combinations offering absolute personalization.

SÉBASTIEN COUDERT-MAUGENDRE



ORAM

Sofa

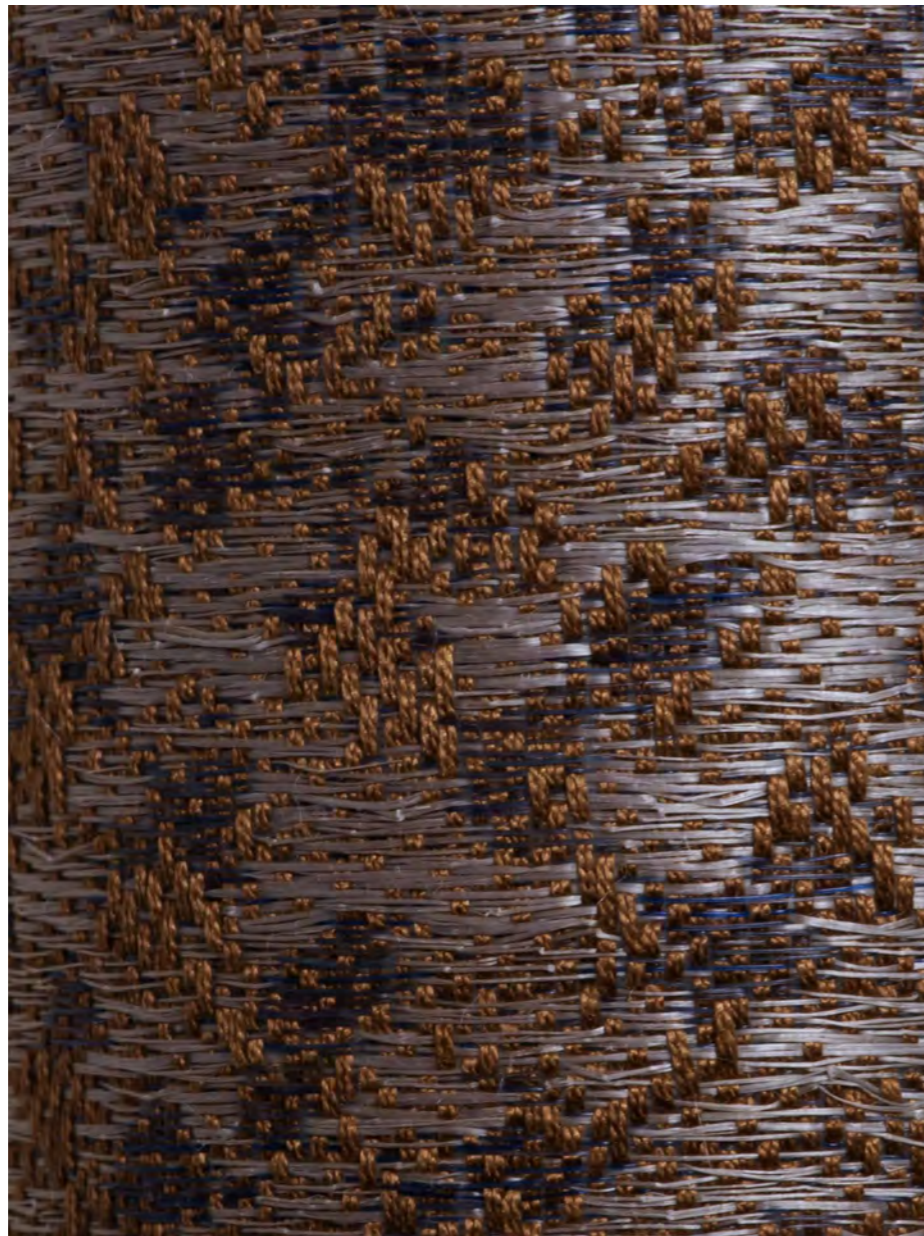
From Latin "coast", Oram is an ode to the beauty of coastal cliffs shaped by time and water. This sofa with soft, clean lines is made up of three upholstered volumes whose fabrics with various textures evoke the rocky landscapes that inspired Sébastien Coudert-Maugendre.

Appreciated for its brilliance and robustness, horsehair is the central material. Only one workshop in the world - located in Challes in the Sarthe department - continues to weave it by hand according to a rare know-how.

The backrest is covered with Horsehair Cavalcade, this remarkably supple textile is made up of a cotton warp and horsehair and sisal wefts. The sisal adds a touch of natural shine to the shadow tones of the horsehair, in an almost three-dimensional changing effect. The seats and armrests are respectively covered with Lounge and Tundra fabrics.

In addition, an end of the independent sofa can be completely personalized and made of oak, travertine, ceramic or marble.





LE CRIN

La Maison Métaphores

Unsurprisingly Le Crin, the workshop in Challes, in France's Sarthe region, is heir to a patent filed in 1787. Vested with the Entreprise du Patrimoine Vivant label, Le Crin is a veritable conservatory. Combined with linen, wool, sisal or metallic threads, horsehair allows for the creation of motifs, light effects and sometimes audacious nuances. Exceptional decorative elements that harmoniously complement the Métaphores collections, horsehair-based weaves open new horizons.

Only one workshop in the world continues to weave horsehair by hand with rare know-how. It takes infinite patience, as well as precise and sure gestures acquired over long months of apprenticeship, to create singular weaves strand by strand. The technique demands such attention to detail that only a few meters are woven each day.

SÉBASTIEN COUDERT-MAUGENDRE



DATE
2023

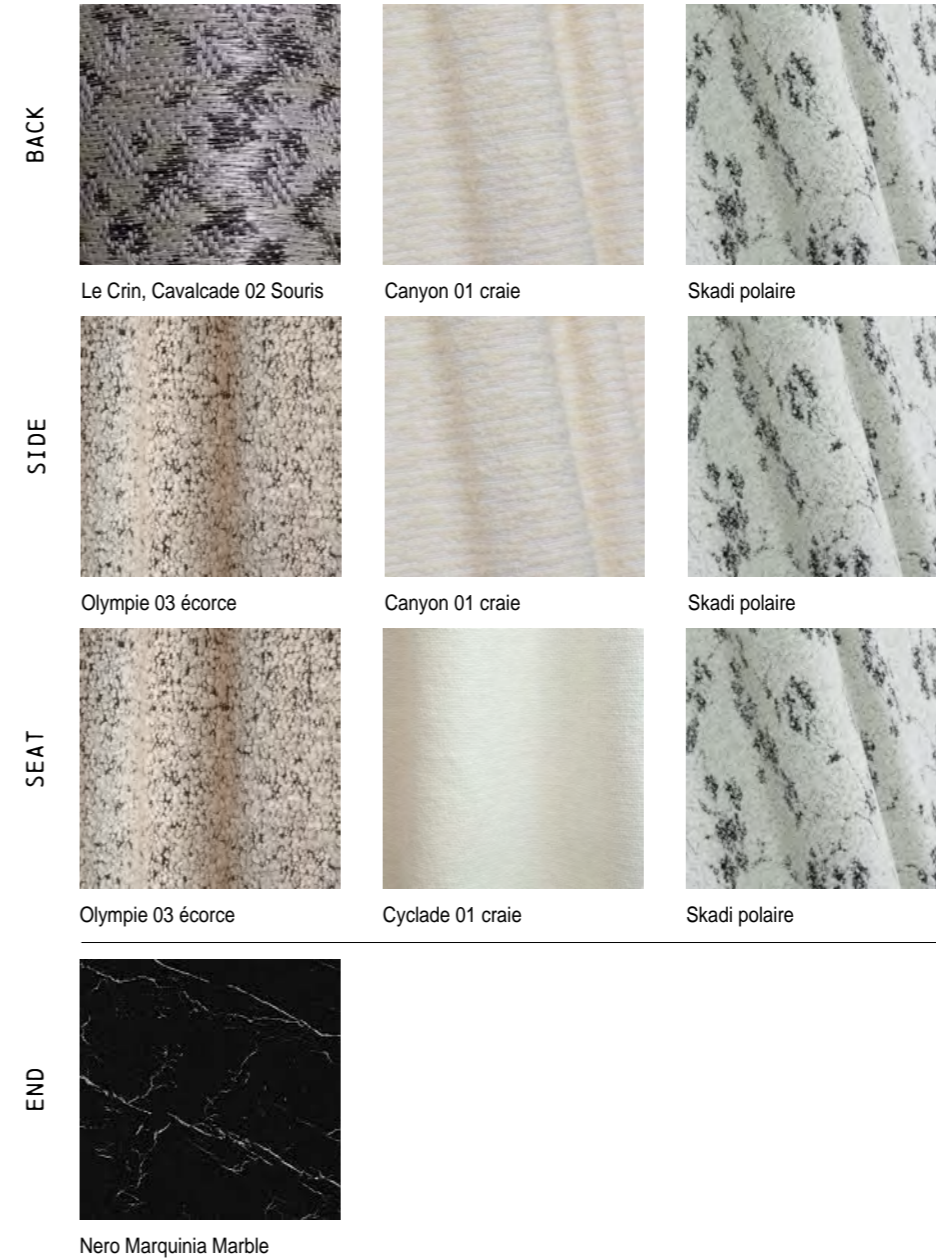
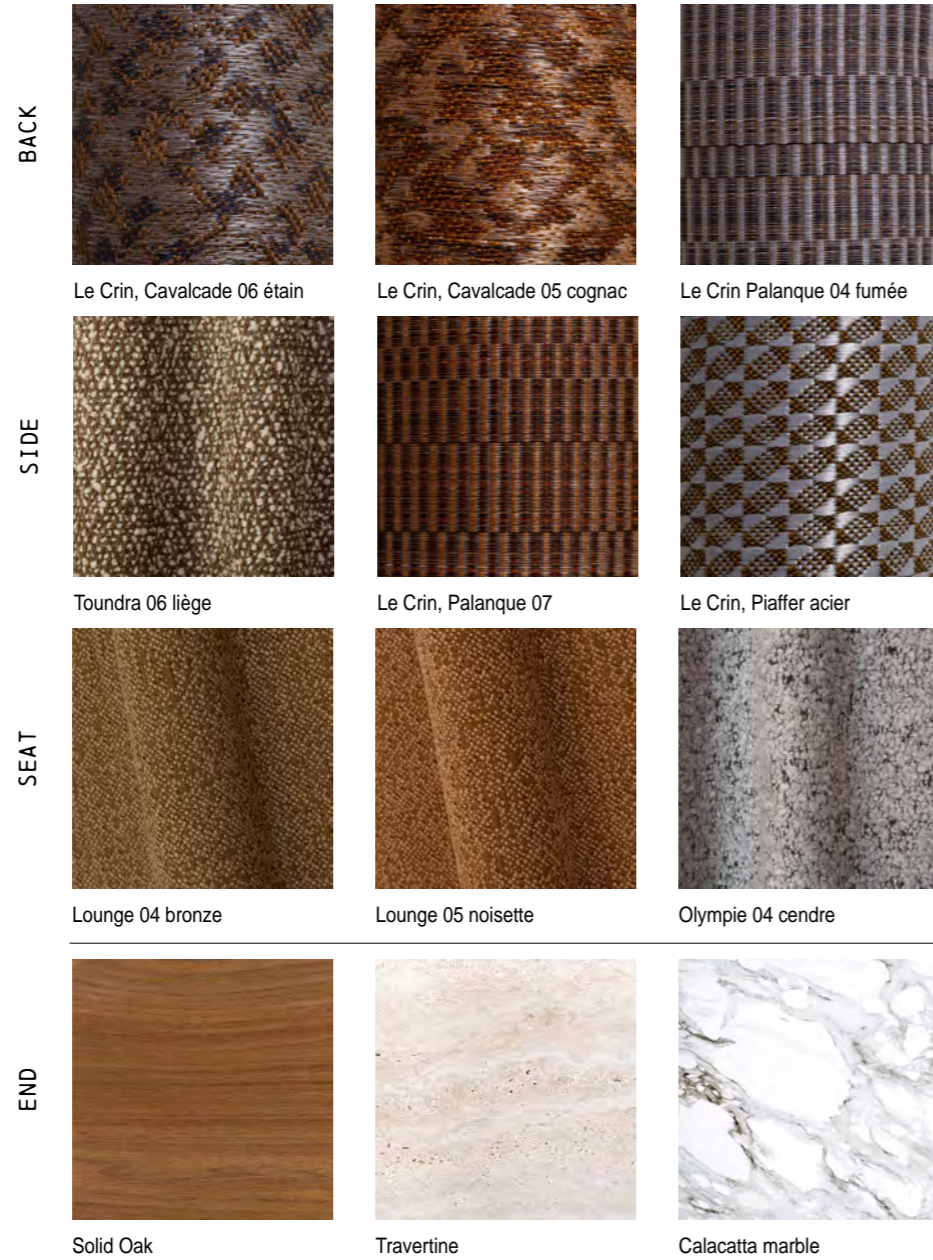
MATERIALS
OAK, HORSEHAIRE/WHOOOL

DIMENSIONS
L 210 X H 80 X P 90 CM

ORIGIN
HAND MADE IN PORTUGAL

LEADTIME
15 WEEKS

SÉBASTIEN COUDERT-MAUGENDRE



*All textiles from Maison Métaphores // **All finishes are created by hand. Variations are to be expected



CUMULUS

Armchair

The Cumulus armchair recalls the soft, cloudy shapes of sea sponges. The padded spheres, erected above floor, offer both comfort and softness.

Available with one or two arms, the seat is covered with a Pampa fabric, woven from virgin wool and mohair threads. Its organic appearance and brushed finish create an effect of movement that reinforces the designer's aesthetic intention.





SÉBASTIEN COUDERT-MAUGENDRE



DATE
2023

MATERIALS
OAK OR ALUMINIUM AND WHOOL

DIMENSIONS
L 88 X H 82 X P 75 CM

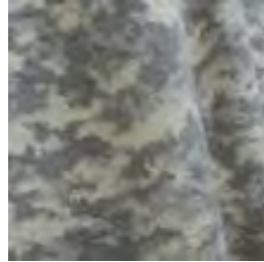
ORIGIN
HAND MADE IN PORTUGAL

LEADTIME
15 WEEKS

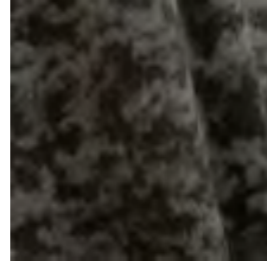
SÉBASTIEN COUDERT-MAUGENDRE



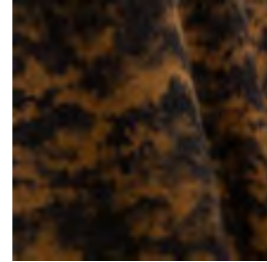
SEAT



Pampa 01 brume



Pampa 02 argile



Pampa 03 fauve

SEAT



Pampa 05 santal



Pampa 06 indigo



Pampa 07 emeraude

SEAT



Olympie 01 craie

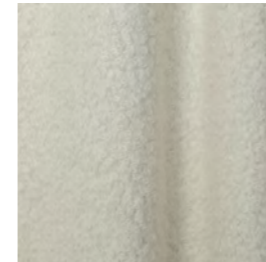


Olympie 02 dune



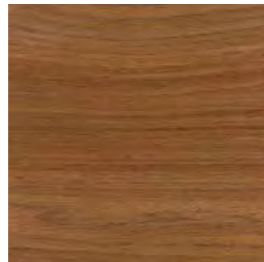
Skadi 01 polaire

SEAT



Everest 01 chantilly

FEET



Solid Oak



Recycled aluminium casting

*All textiles from Maison Métaphores // **All finishes are created by hand. Variations are to be expected



NYMPHEAS

Side table

Playing on shape and layering
With tops in different colours, sizes and materials, the Nymphéas tables recall, through their dynamic composition, the fluid movement of the leaves of aquatic plants, deeply anchored under water.

Made in collaboration with the Breton company Gwilen, -which offers new, more ecological alternatives in the world of design and architecture-, the trays are made from marine sediments extracted in the estuaries of the region. The material is dried in the open air, without fire, then natural color pigments are added to create subtle variations.

The structure, as well as other tops that make up this creation, are made of recycled aluminum casting in a workshop located in the port city

of Porto. On site, cabinetmakers cut wooden molds, which will be used to pour the molten metal. Each element is then coated with black sand to provide a distinctive aesthetic touch. This process has several advantages both environmental, thanks to the use of recycled materials, and economical by enhancing existing resources.

Thus produced, the Nymphéas table illustrates the artistic vision and innovative approach of Sébastien-Coudert Maugendre, where the design is shaped by the gesture of the craftsman and the exploration of materials.

Like the other pieces in the collection, the height, size and number of elements can vary according to individual desires and needs.





MARINE SEDIMENTS

Collaboration with Gwilen

Gwilen is the name of the longest river in Brittany, the Vilaine. Yann, founder of GWILEN, grew up on the banks of its estuary.

Since the construction of a dam in the 1970s, this estuary has gradually silted up. So much so that today, it is estimated that about 100,000 cubic meters of sediment would have to be extracted each year for it to recover its natural appearance.

This estuary, a protected natural area, is symbolic of the impact that humans have on their environment.

This silting problem concerns estuaries,

but also ports. Indeed, when a current slows down, the particles that are suspended in the liquid have time to settle on the bottom. Siltation is inevitable and intrinsic to the design of ports. It is all ports, Breton, French, and even worldwide that silt up.

Architect and engineer, Yann saw in these materials a potential resource for new construction materials. This is how he started developing a transformation process to solidify these sediments, with the criterion of limiting energy consumption during the transformation process.

SÉBASTIEN COUDERT-MAUGENDRE



DATE
2023

MATERIALS
MARINE SEDIMENTS AND CASTED RECYCLED ALUMINIUM

DIMENSIONS
L 85 X H 80 X P 72 CM

ORIGIN
HAND MADE IN FRANCE

LEADTIME
15 WEEKS

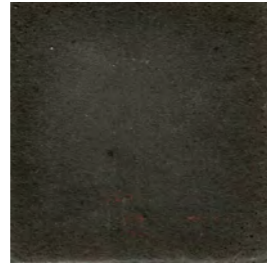
SÉBASTIEN COUDERT-MAUGENDRE



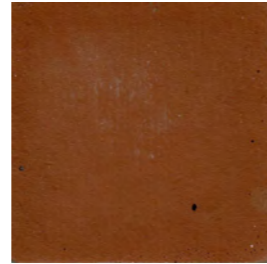
SEDIMENTS



Natural



Carbon black



Tangerine orange

SEDIMENTS



Amber yellow



Vert asperge



Coral red

STRUCTURE



Recycled casted aluminium

SEDIMENTS



Amarante red



Cerulean blue



Frosted blue

SEDIMENTS



Tobacco brown

*All finishes are created by hand. Variations are to be expected



EROSION

Side table

A tribute to the Arkhitektons - three-dimensional models made in the 1920s by the artist Kasimir Malevich - the Erosion table evokes the way in which water and time alter shapes and materials by rounding edges and blurring lines .

The foot of the sculpture is made from a ceramic 3D print and carefully finished by hand with the addition of glazes by the Atelier Lumierrante in Paris. These are made of a mixture of porcelain and lava stone available in more than ten shades.

Finally, the tops, available in brass, steel or wood, skilfully play with textures, creating a captivating contrast around an infinity of combinations.





DATE
2023

MATERIALS
CERAMIC AND BRUSHED BRASS OR RECYCLED ALUMINIUM

DIMENSIONS
Ø 40 X H 50 CM

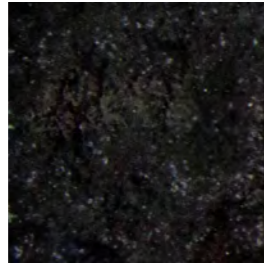
ORIGIN
HAND MADE IN FRANCE

LEADTIME
15 WEEKS

SÉBASTIEN COUDERT-MAUGENDRE



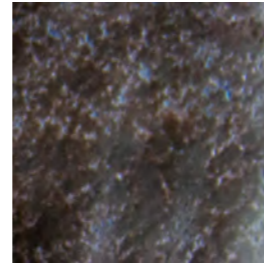
FOOT



Noir Harkonnen brillant

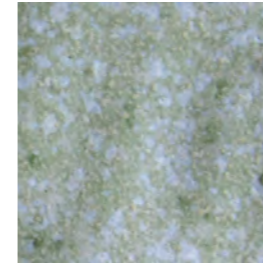


Vert Malachite_Mate

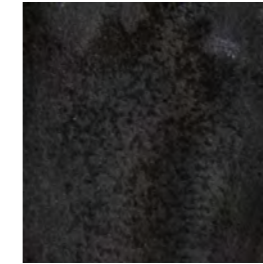


Noir Nuit Harkonnen Satine

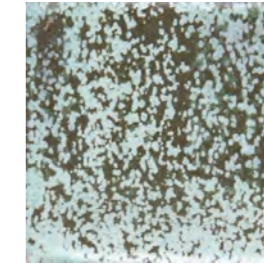
FOOT



Vert Kaki Lac Mate



Noir Styx



Vert Maya

FOOT



Beige Genelle



Orange Volcano



Jaune Africa

FOOT



Bleu Drene Co



Bleu Lac



Moucheté Bazalt

FOOT



Dozone 1

TOP



Brushed brass



Recycled casted aluminium

*All finishes are created by hand. Variations are to be expected



TRIPODE

Armchair

Surprising with its enigmatic allure, the Tripode armchair is made of recycled aluminum casting, in the same workshop as the Nymphéas table. Its comfortable yet aesthetic upholstery creates a striking contrast with its sculptural form. The armchair is covered with a Canyon jacquard, a fluffy loop made mainly of alpaca wool giving it a sophisticated and luminous touch.





DATE
2023

MATERIALS
CASTED RECYCLED ALUMINIUM AND WOOL

DIMENSIONS
L 84 X H 71 X P 70 CM

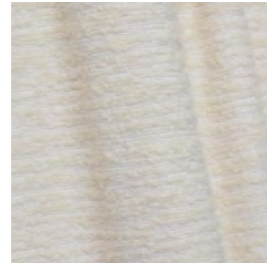
ORIGIN
HAND MADE IN PORTUGAL

LEADTIME
15 WEEKS

SÉBASTIEN COUDERT-MAUGENDRE



SEAT



Canyon 01 craie

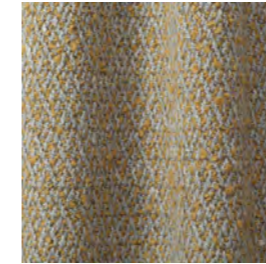


Canyon 02 dune

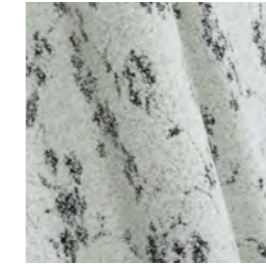


Toundra 06 liège

SEAT



Toundra 05 silex

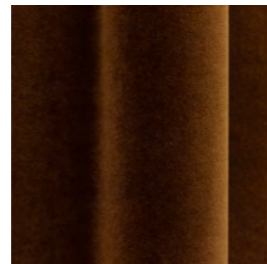


Skadi 01 polaire

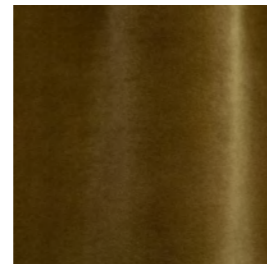


Everest 01 chantilly

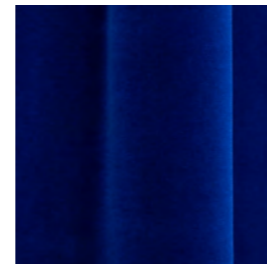
SEAT



St Germain 47 Havane

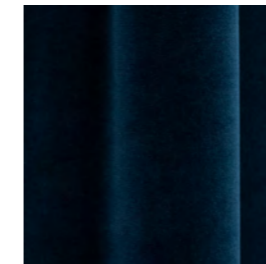


St Germain 13 bronze



St Germain 56 Electric

SEAT



St Germain 49 prusse



St Germain 43 sanguine

STRUCTURE



Recycled casted aluminium

*All textiles from Maison Métaphores // **All finishes are created by hand. Variations are to be expected

UNIQUE
PIECES



NESTED STRUCTURES

Armchair RV03

DATE
2022

MATERIALS
FRENCH WALNUT, FELT FROM ITALIAN TYROL
MOUNTAINS, CHISELED BRASS AND EMBROIDERY

DIMENSIONS
H 83 X L 82 X P 74 CM

ORIGIN
HAND MADE IN FRANCE

The pieces in the NESTED STRUCTURES collection are the result of a new approach, born of the desire of the Collective Rhizome's craftsmen to unite their know-how and create exceptional pieces designed by Sébastien Coudert-Maugendre.

Sébastien created interlocking systems of circular and vertical shapes, noble and

raw materials, shadow and light which he transcribed into the drawings and plans of the objects. Organizing the time of creation as a single large workshop, the eleven craftsmen and the designer enter into constant dialogue to produce the pieces. Each stage requires several craftsmen to exchange their know-how and adapt to each other to create the successive volumes.





NESTED STRUCTURES

Armchair RV03

DATE
2022

MATERIALS
FRENCH WALNUT, FELT FROM ITALIAN TYROL
MOUNTAINS, CHISELED BRASS AND EMBROIDERY

DIMENSIONS
Ø 83 X DIA. 50 CM

ORIGIN
HAND MADE IN FRANCE

The manufacture of the pieces is thought of as a system of interweaving of shapes and materials in which the crafts are interdependent. Production is done sequentially, each step requiring several craftsmen to exchange their know-how in order to adapt to each other to produce successive volumes. The sculpture of the marble takes into account the work of the steel, which in return anticipates the insertion of the elements of cabinetmaking.

SÉBASTIEN COUDERT-MAUGENDRE



ALTARS

Armchair SV03

DATE
2022

MATERIALS
SOLID ASH WOOD

DIMENSIONS
H 70 X L 83 X W 66 CM

ORIGIN
HAND MADE IN FRANCE

Each piece is thought as an architecture, the lines and angles of sacred archeological sites become contemporary and dynamic shapes. The opposition of sleek and complexe textures, straight lines and curves. A metaphore between past and present where modern techniques are fused with the precise hand work of fine craftsmanship.





SEBASTIEN COUDERT MAUGENDRE

Interior Designer

Sébastien Coudert-Maugendre, born in 1987, is a designer and interior architect.

In his Paris studio, he explores new synergies between design, architecture, new technologies and crafts. His constant search for materiality, light and shapes pushes him to design unique projects where poetry serves functionality in the right balance between contemporary and timeless lines.

Sébastien Coudert-Maugendre is largely influenced by his multicultural education between France, China and Taiwan and his many other experiences in Europe or Central America. The diversity of landscapes and cultures are, for him, so many sources of inspiration.

In 2016, he decided to move to Paris to study interior architecture and design at ESAM Design (Ecole Supérieure des Arts Modernes) in Paris. He opened his agency in 2019, the year he graduated.

In 2022, Sébastien Coudert-Maugendre supports the development of the Rhizome collective, made up of 11 craftsmen who participate in the realization of its architectural projects. He also created his first pieces, including the RV03 armchair from the "Nested Structures" collection, which was selected for projects by interior designers Anne Sophie Pailleret and Stéphanie Coutas as well as by Maison Piasa during the Salon Révélation 2022 at the Grand Palais Ephémère.

EXHIBITIONS :

- 06.2022 : Salon Révélation, Grand Palais Ephémère, Paris
- 09.2022 : Paris Design Week factory, Espace Commines, Paris
- 09.2022 : Twin Cities Shanghai-Paris, Galerie Joseph, Paris
- 01.2023 : Paris Deco Off, Galerie Stéphanie Coutas, Paris
- 09.2023 : Paris Design Week, showroom Métaphores, Paris
- 09.2023 : Paris Design Week factory, Espace Commines, Paris

SEBASTIEN COUDERT-MAUGENDRE



Copyright © 2023, Sébastien Coudert-Maugendre, all rights reserved

2023/2024

SÉBASTIEN COUDERT MAUGENDRE

Designer & Interior architect
contact@coudert-maugendre.fr
M : +33 (0) 619 603 890
www.coudert-maugendre.fr
instagram : @sebastien_coudert_maugendre

PHOTOGRAPHY

Mario Simon Lafleur
Jérôme Galand - Courtesy AD Magazine France
Victor Hugo Photographer



SÉBASTIEN COUDERT-MAUGENDRE



SÉBASTIEN COUDERT-MAUGENDRE

interior architect & designer